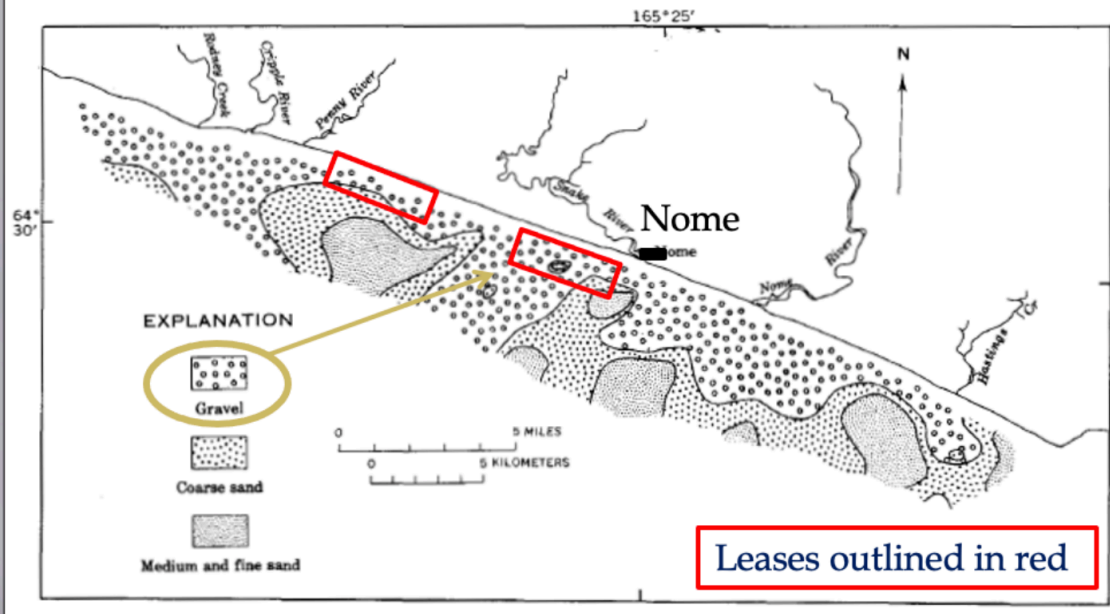


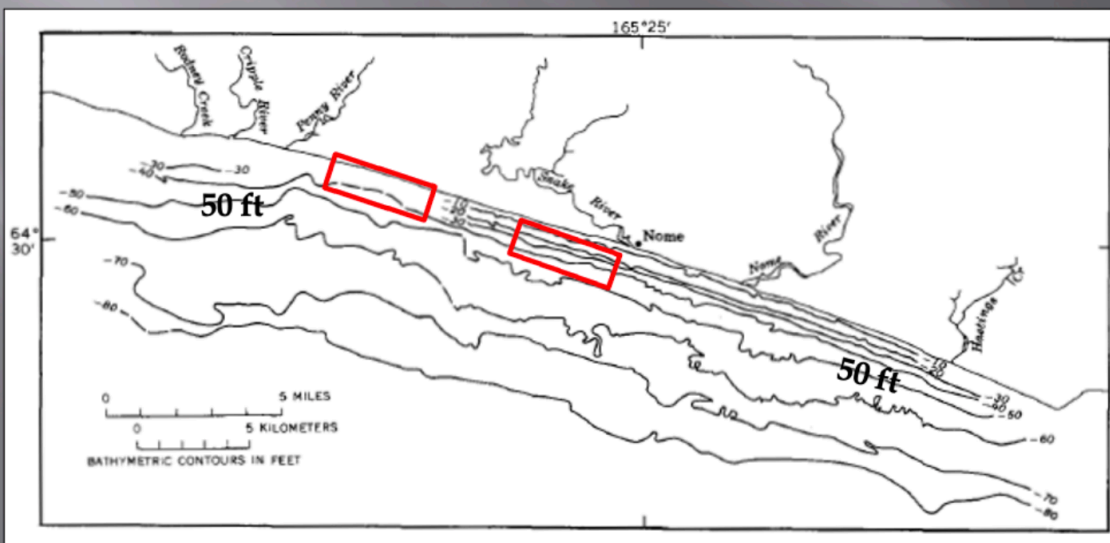
Dredge barge in operation off Nome





Offshore sediment

Placer gold is concentrated in gravels deposited by glaciers

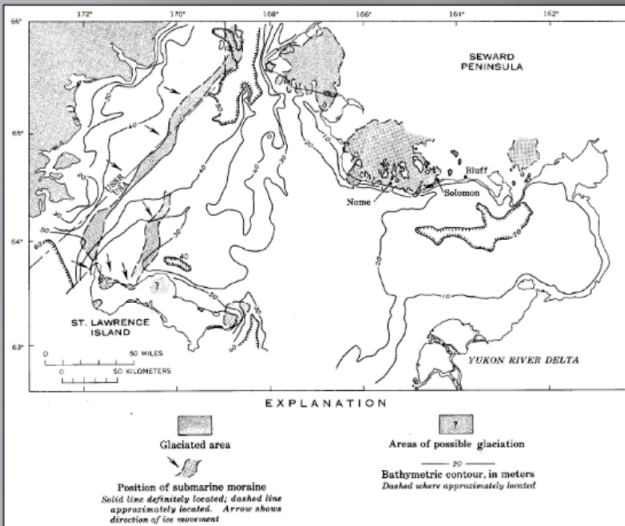


Water depth

Leases lie in water from shoreline to 50 feet (15 metres)

Role of glaciers in gold redistribution

Glaciers from last ice age (shaded grey in map on left) picked up gold from existing onshore placers (striped areas in map below) and from bedrock on Seward Peninsula and carried the gold into Norton Sound.



Onshore placers & sea currents

Gold contained in glacial "till" (rock material deposited by retreating glaciers) may be redistributed in Norton Sound by sea currents (shown by black arrows in map at right).

